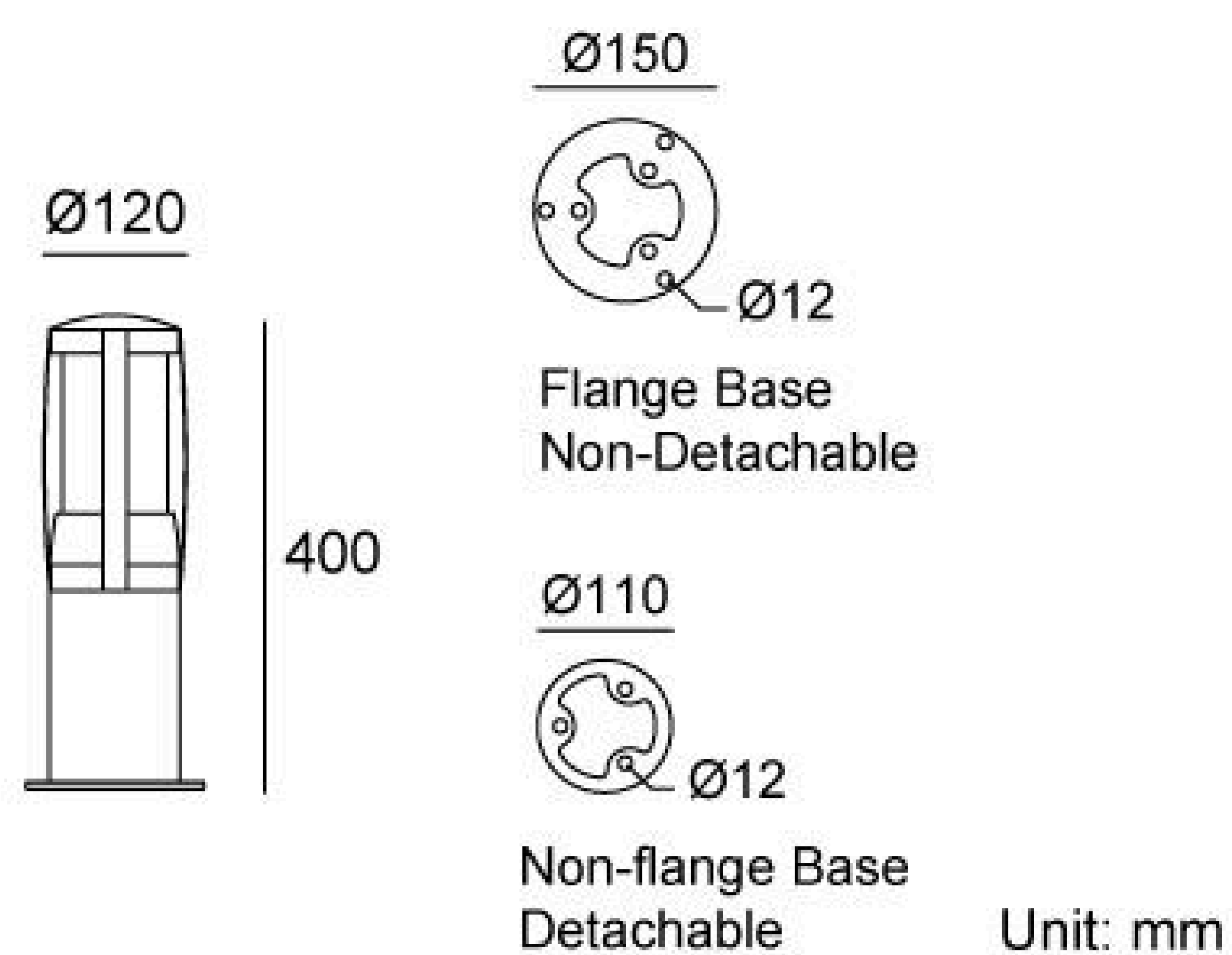


09ARLD8434A

Height (mm)	400
Light Source	84x0.1W
Input Voltage (V)	DC 24 AC 120 240
Operating Current (MA)	24V=415 120V=79 240V=43
Consumption (W)	24V=10 120V=9.4 240V=9.6
Luminance (LM)	VVV=497
IK	05

Linear Drawing



Specification

Housing	12# Die-casting aluminum powder coated. T=60-80µm Adhesion of ISO class 1/ASTM class 4B
Light Window	PMMA
LED Type	SMD
LED Driver	Built in on/off driver
Operating Temperature	-20°C~40°C
Power Cable	Outside of luminaire (Without waterstopper) 24V: H05RN-F 2×1.0mm², L=0.5m 120V/240V: H05RN-F 3×1.0mm², L=0.5m
Base	Flange base
Dimming Support	External DALI supported TRIAC,0-10V, PWM via external driver on request

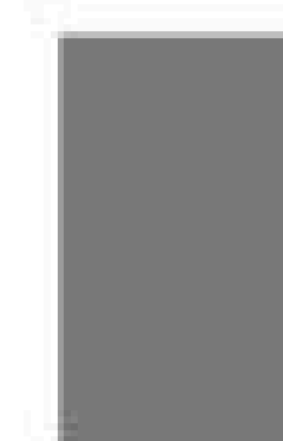
Painting Color

Primary

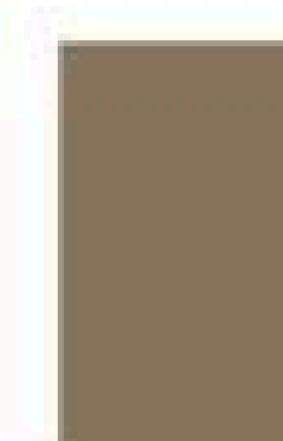


Sanded Black
RAL 9005

Secondary

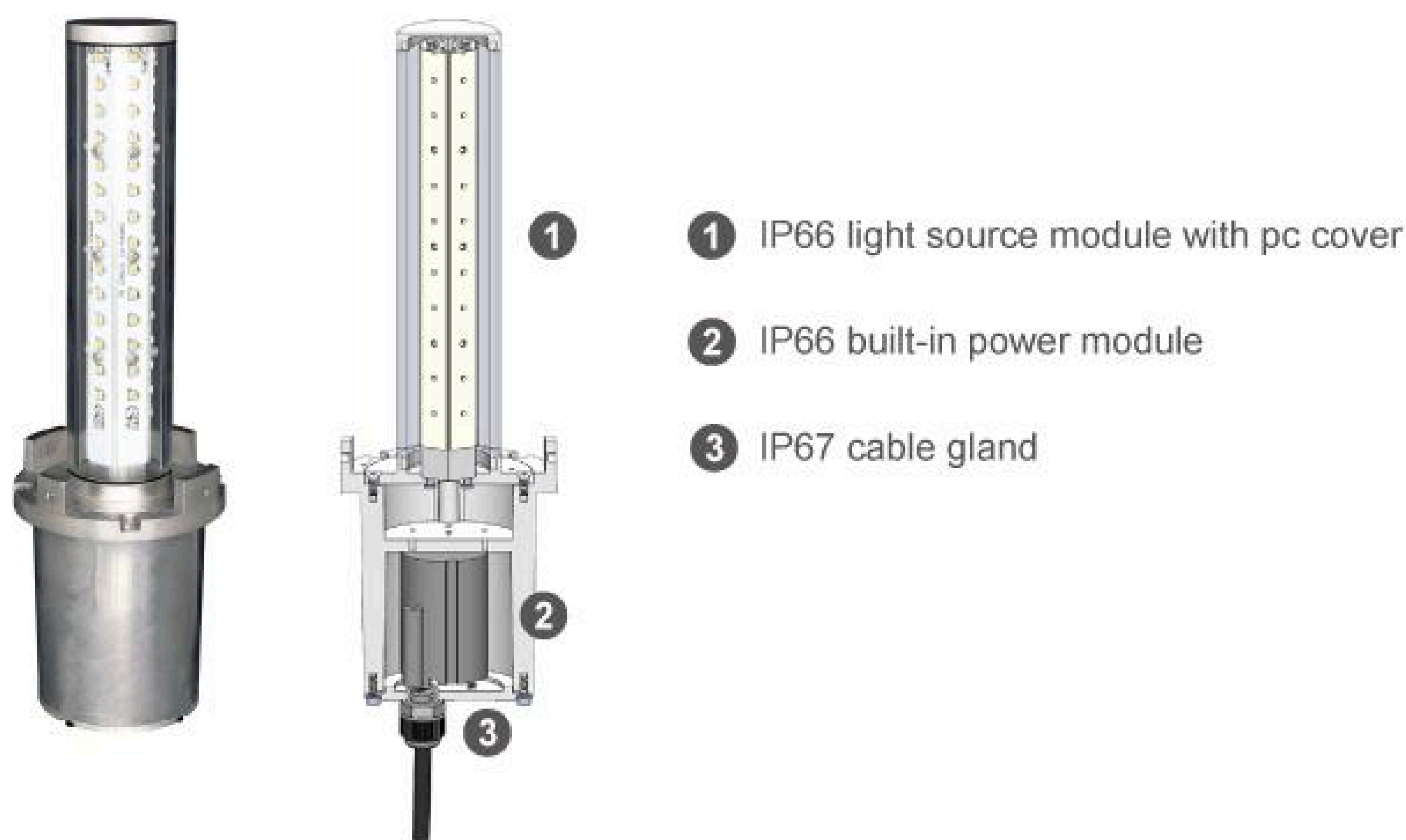


Sanded Dark Grey
KAP 7037



Sanded Bronze
KAP 7008

Modular Light Source and Power with IP-66

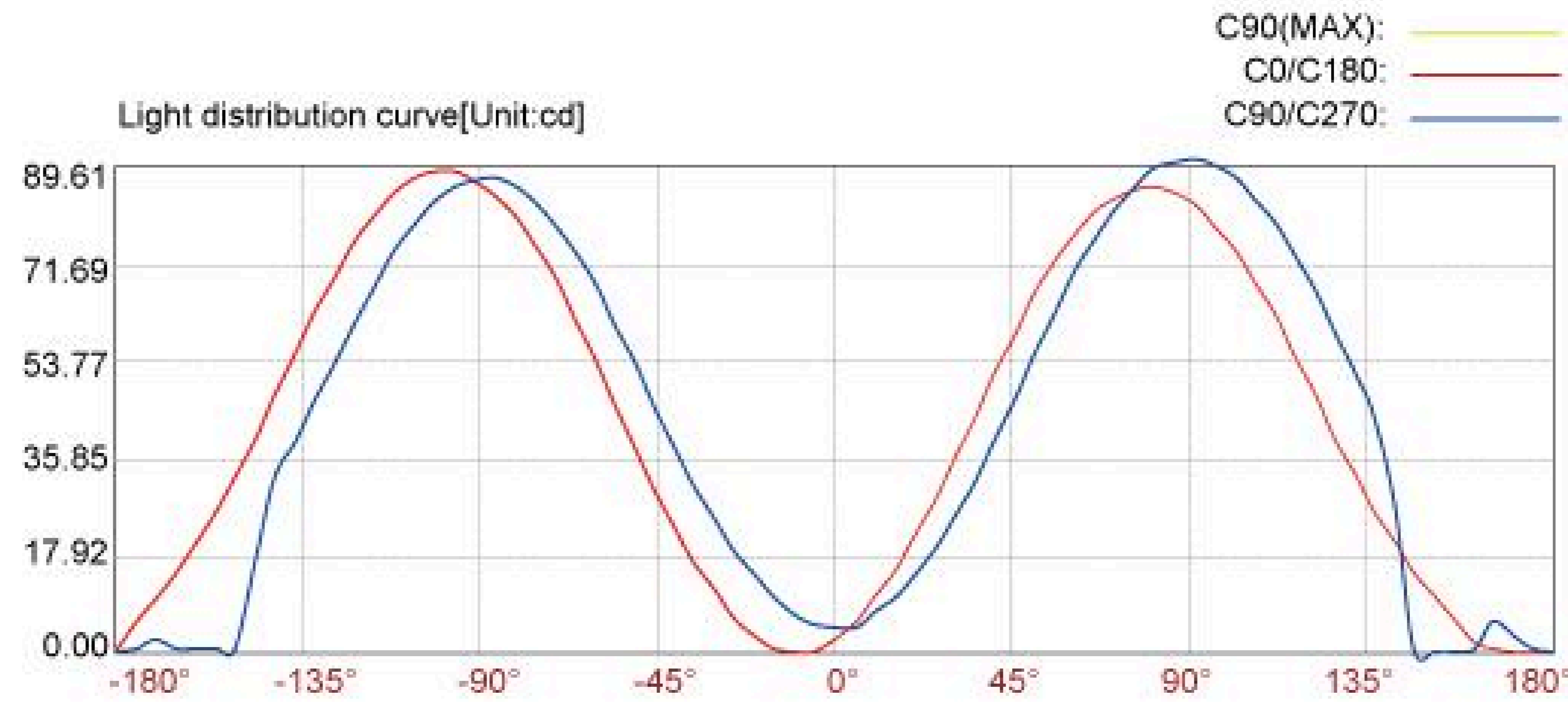
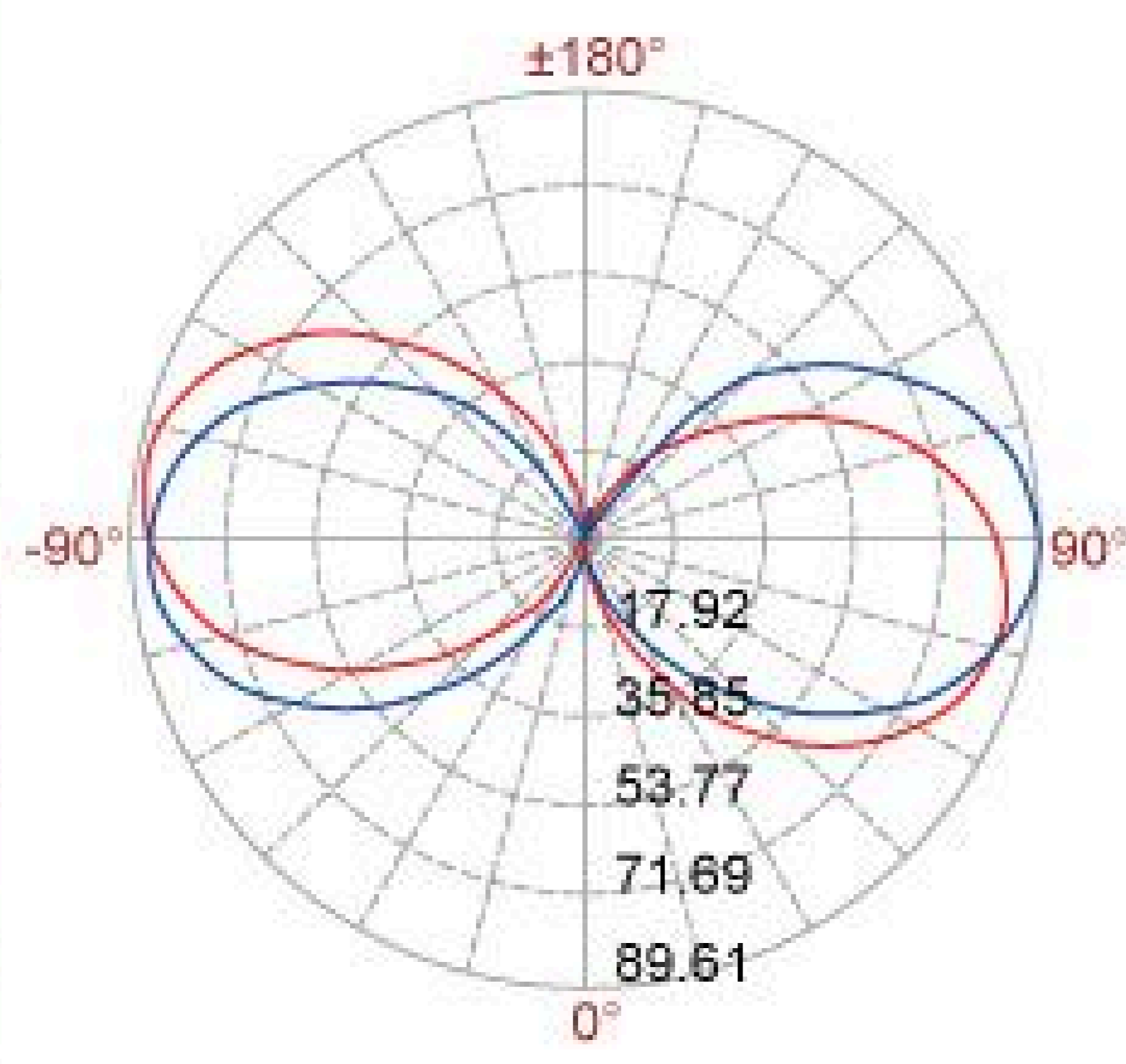


Base Options

Source Mounting Base	Inground Base (Optional)	Ground Anchor Base (Optional)
<p>Type A Flange Base Non-Detachable</p>	<p>JC3001</p>	<p>22A</p> <p>Installation steps (Optional)</p>
<p>Type B Non-flange Base Detachable</p>	<p>JC3002</p>	<p>25A</p> <p>Installation steps (Optional)</p>

Photometric

12m	0.01 LUX
11m	
10m	0.02 LUX
9m	
8m	0.03 LUX
7m	
6m	0.06 LUX
5m	
4m	0.13 LUX
3m	
2m	0.54 LUX
1m	



Lux distance curve

Center beam LUX	Beam width H	Beam width V
2m	0.54 LUX	0.0m 1.7m
4m	0.13 LUX	0.0m 3.4m
6m	0.06 LUX	0.0m 5.1m
8m	0.03 LUX	0.0m 6.8m
10m	0.02 LUX	0.0m 8.5m
12m	0.01 LUX	0.0m 10.1m

Ver. Spread: 0.0 Horiz. Spread: 45.8