

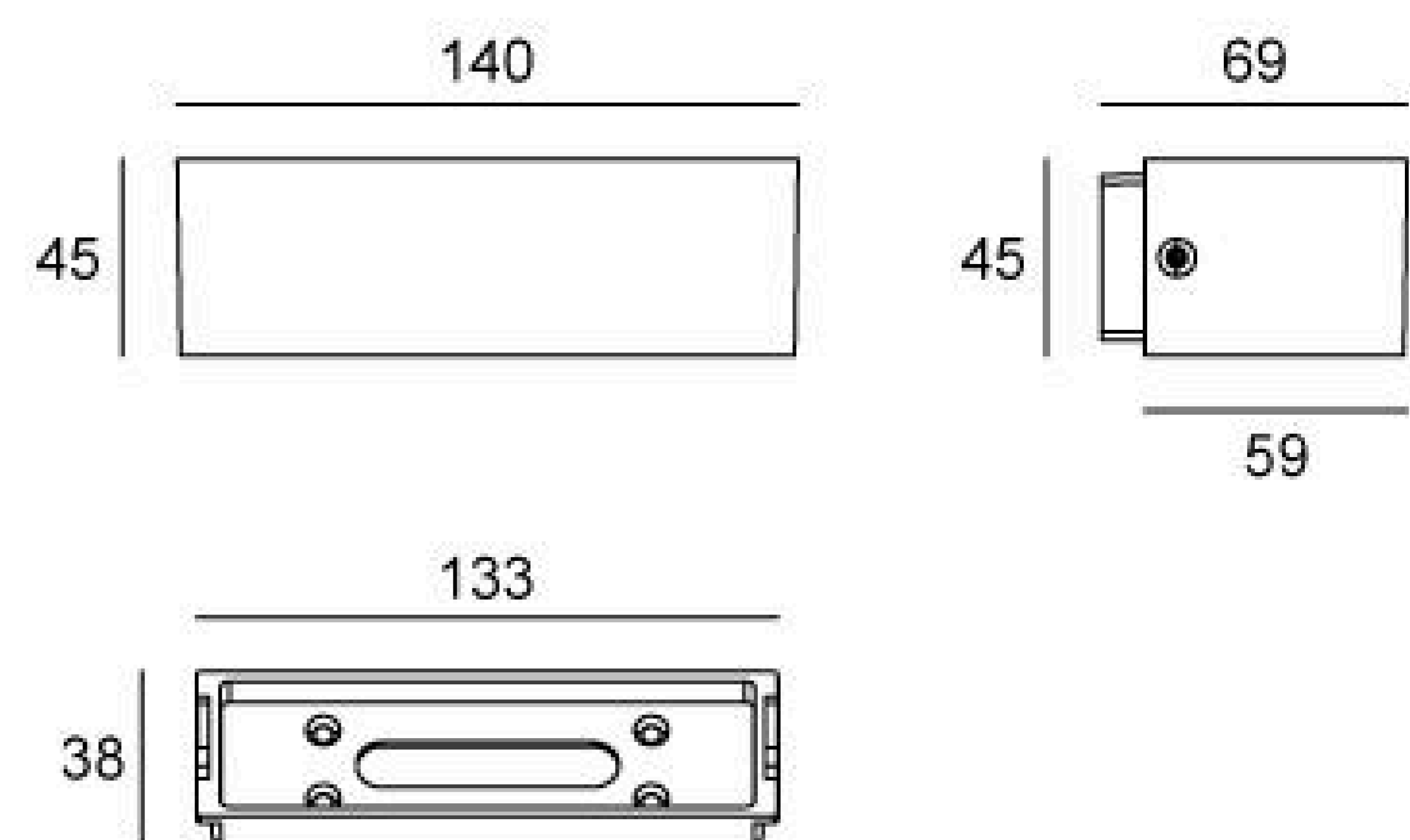
07HWD1433 (ONE SIDE)

Light Source	14x0.2W
Selected Degree (°)θ1/2	87° x 60°
Input Voltage (V)	DC 24 AC 240
Operating Current (MA)	24V=156 240V=15
Consumption (W)	24V/240V=3.75
Luminance (LM)	WW=112
IK	06

Specification

Housing	12# Die-casting aluminum finishing or powder Painting T=60-80µm.Adhesion of ISO class 1/ASTM class 4B
Glass	Tempered frosted glass T=3mm
Gasket	Waterproof silicone gasket
LED Type	SMD
Driver	Built in on/off driver
Operating Temperature	-30°C-40°C
Power Cable	Outside of luminaire (Without waterstopper) 24V: H05RN-F 2×1.0mm ² , L=0.3m 240V: H05RN-F 3×1.0mm ² , L=0.3m

Linear Drawing



Unit: mm

Painting Color

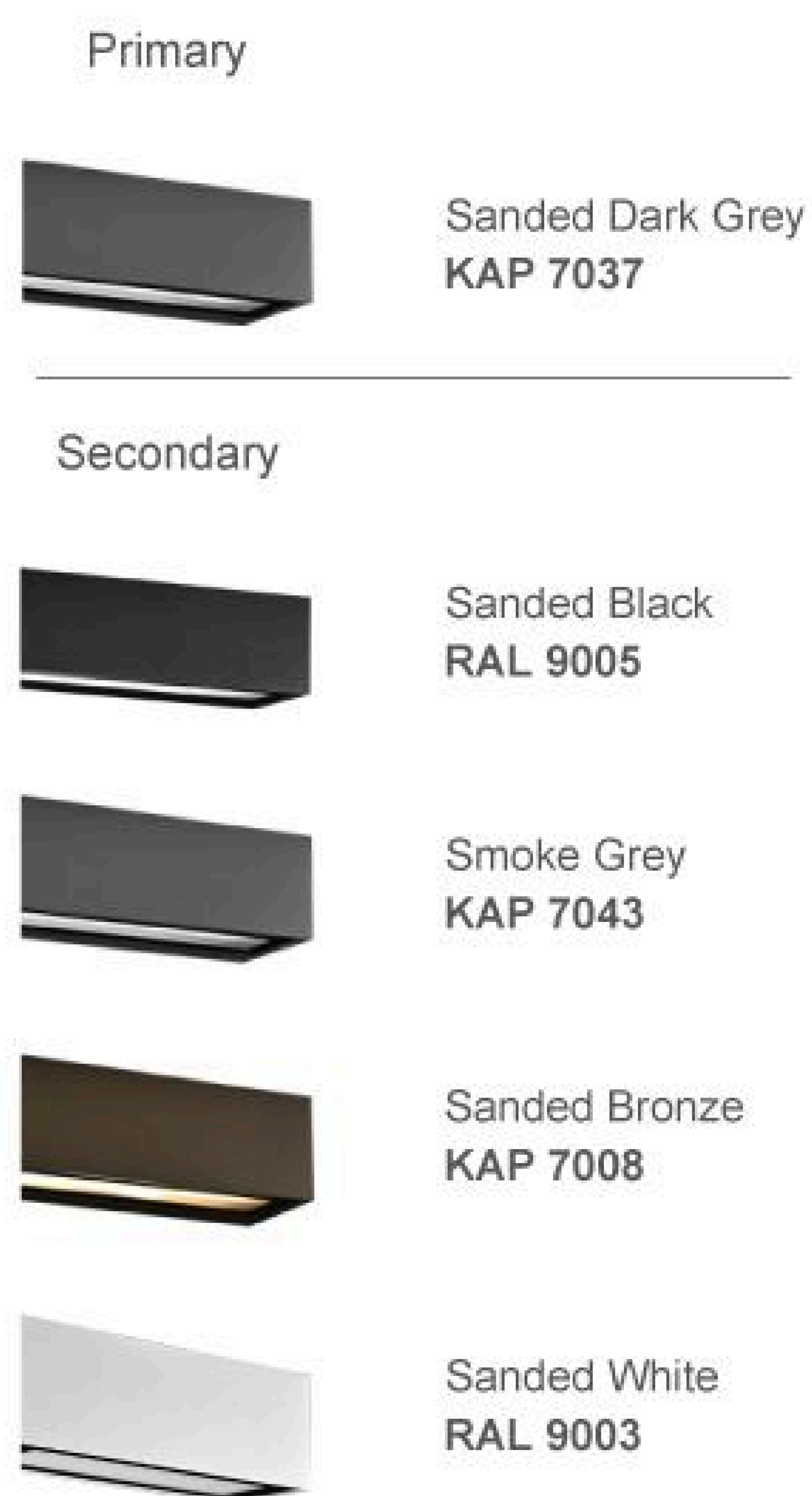
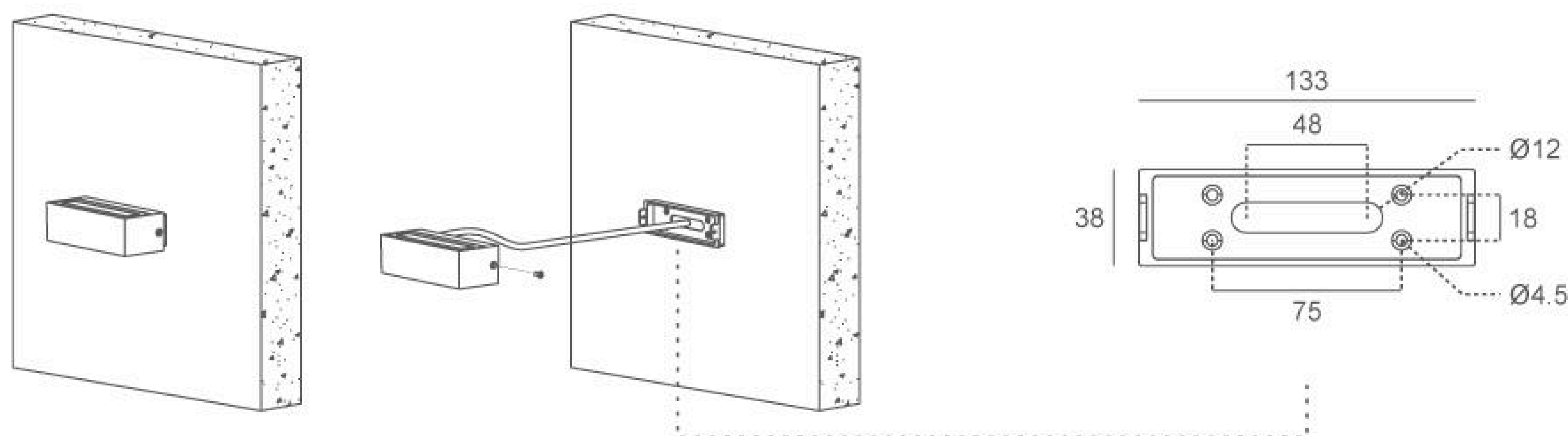
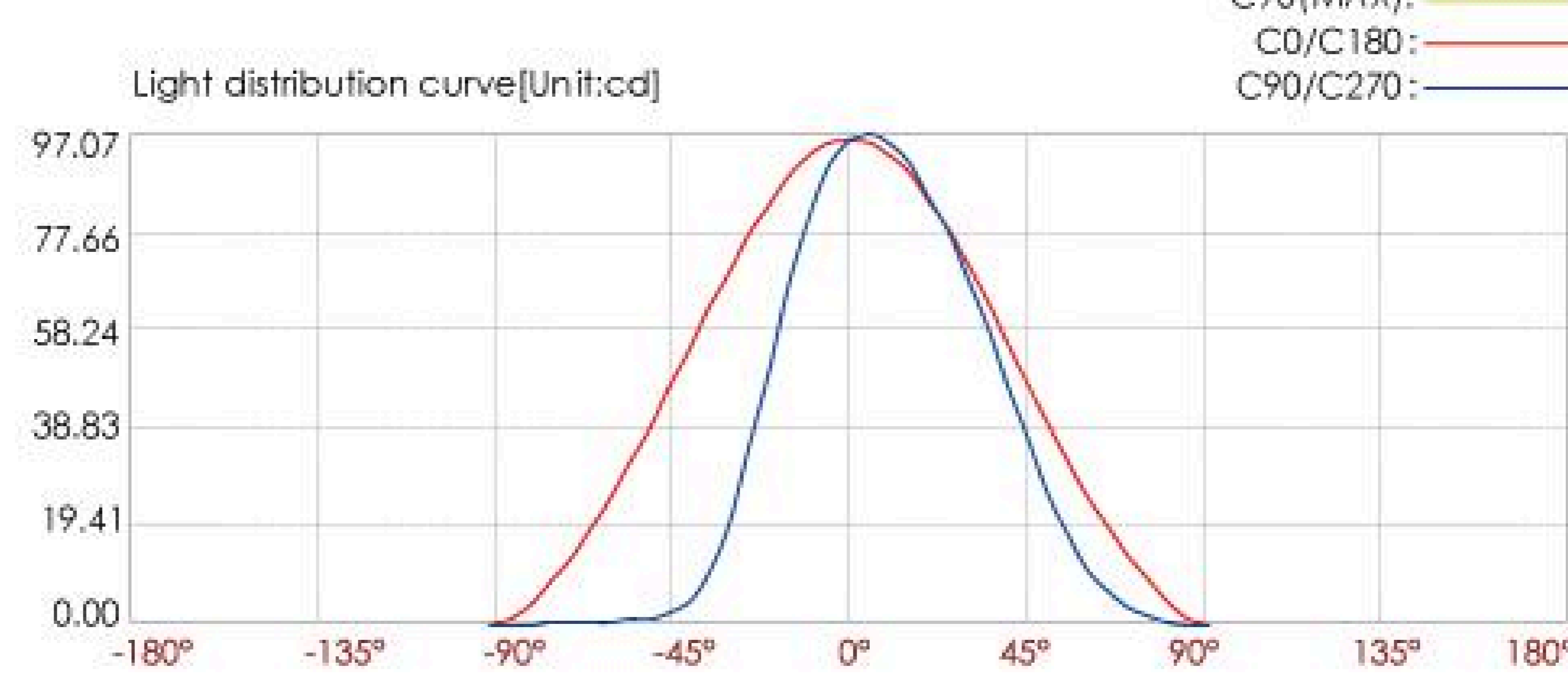
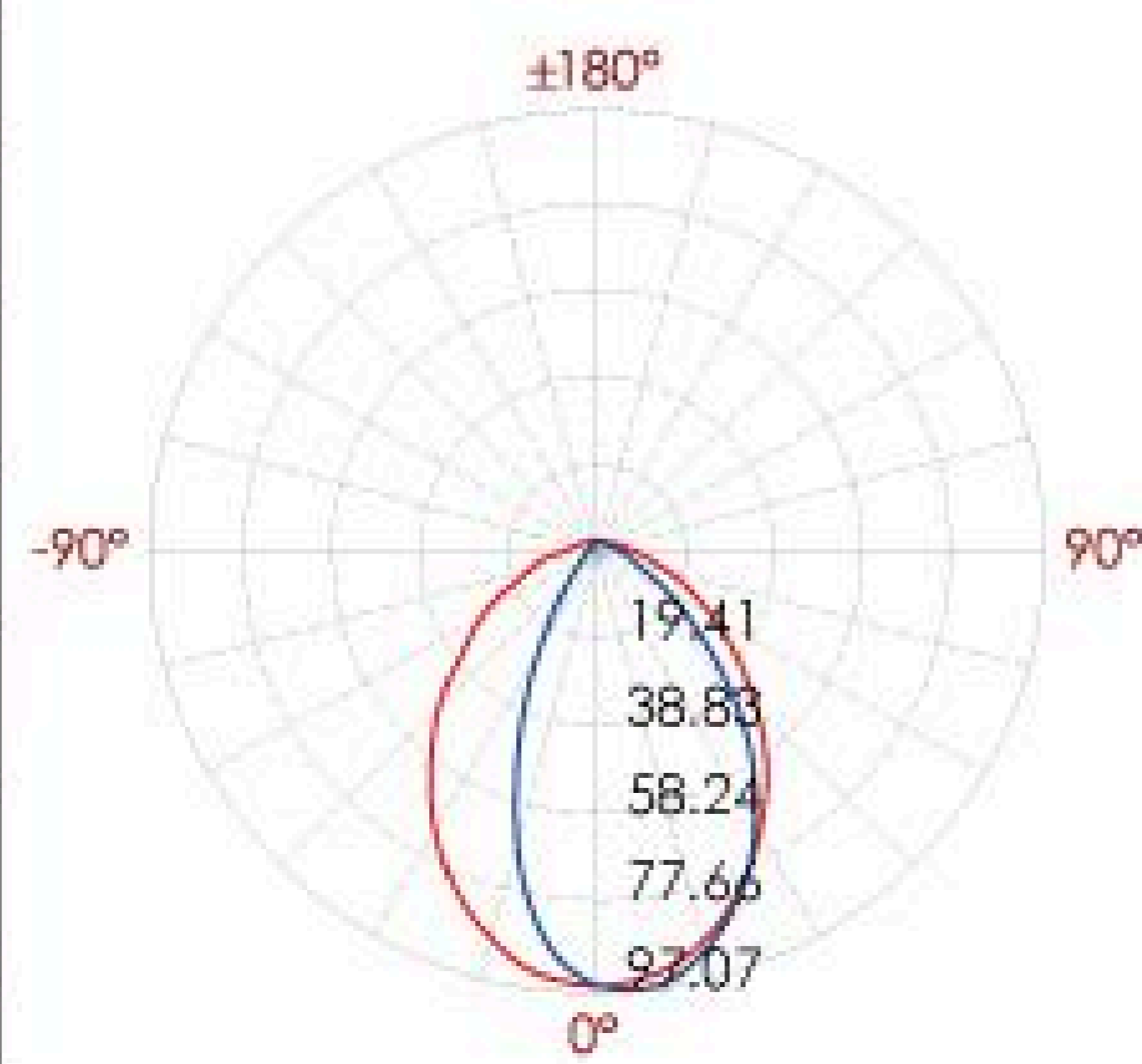


Diagram of Instruction



Photometric

12m	0.67 LUX
11m	
10m	0.96 LUX
9m	
8m	1.50 LUX
7m	
6m	2.67 LUX
5m	
4m	3.77 LUX
3m	
2m	24.00 LUX
1m	



Lux distance curve

Center beam LUX	Beam width	
	V	H
2m	3.8m	2.3m
4m	7.7m	4.6m
6m	11.5m	6.9m
8m	15.4m	9.2m
10m	19.2m	11.5m
12m	23.1m	13.8m

Ver.Spread:87.7 Horiz.Spread:59.9