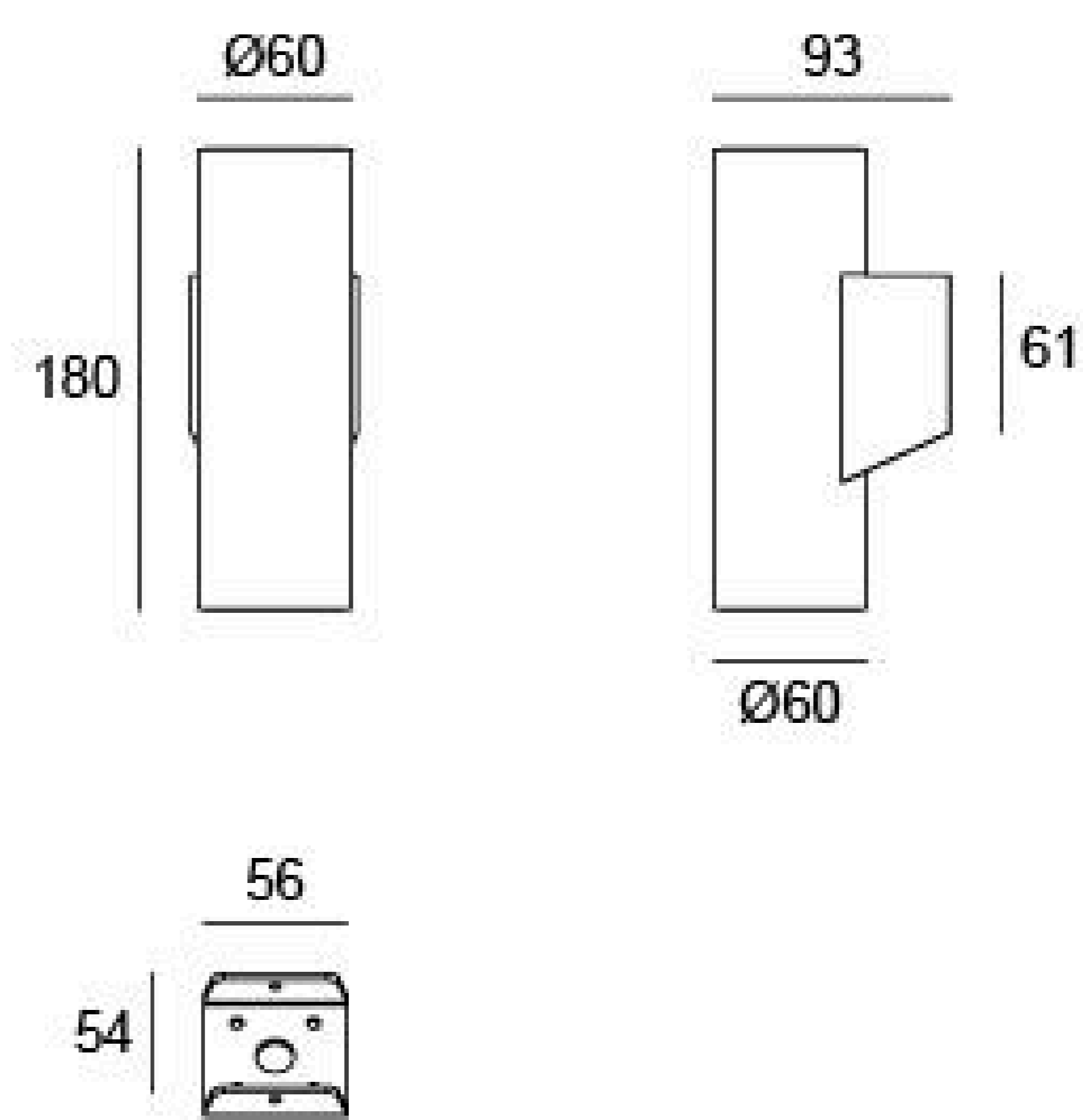


## 07DHB0224K (TWO SIDE)

Light Source	2x4.5W
Lens	B54
Selected Degree (°)θ1/2	24°
Input Voltage (V)	DC 24 AC 240
Operating Current (MA)	24V=420 240V=49
Consumption (W)	24V=10 240V=10.7
Luminance (LM)	WW=282x2
IK	08

## Linear Drawing



Unit: mm

## Specification

Housing	Extruded aluminum alloy #6063 powder coated T=60-80µm. Adhesion of ISO class 1/ASTM class 4B
Light Window	PC
Gasket	Waterproof silicone gasket
LED Type	COB
Driver	Built in on/off driver
Operating Temperature	-20°C~40°C
Power Cable	Outside of luminaire (Without waterstopper) 24V: H05RN-F 2×1.0mm², L=0.3m 240V: H05RN-F 3×1.0mm², L=0.3m

## Lens (Item Code)

## Referenced Degree(°)θ1/2

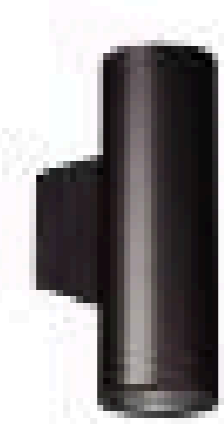


B54

15° 24° 38° 45°

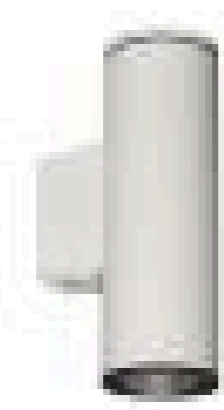
## Painting Color

### Primary

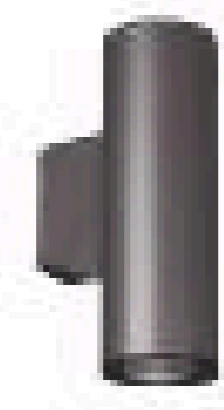


Sanded Black  
RAL 9005

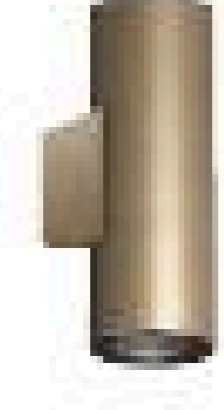
### Secondary



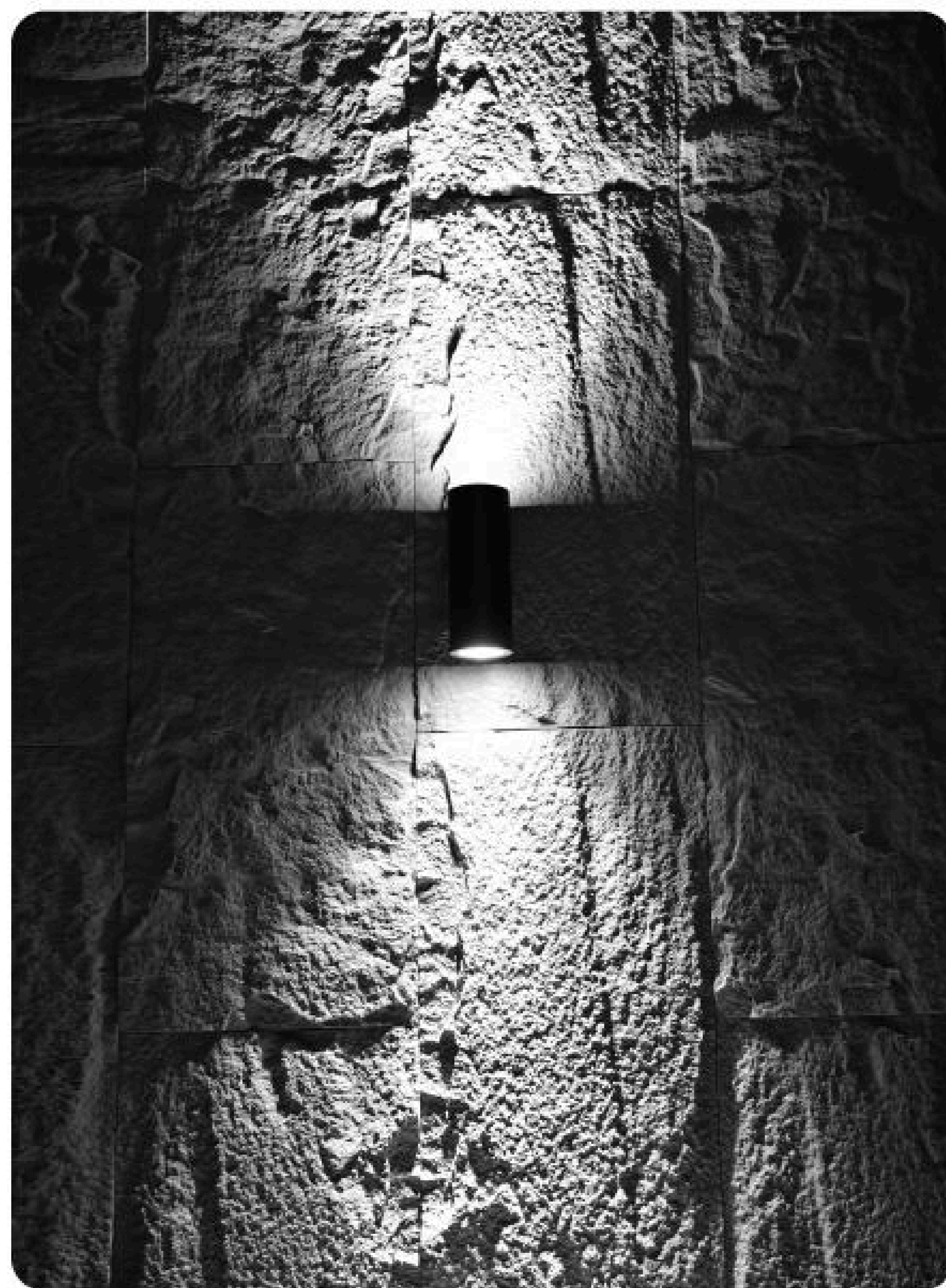
Sanded White  
RAL 9003



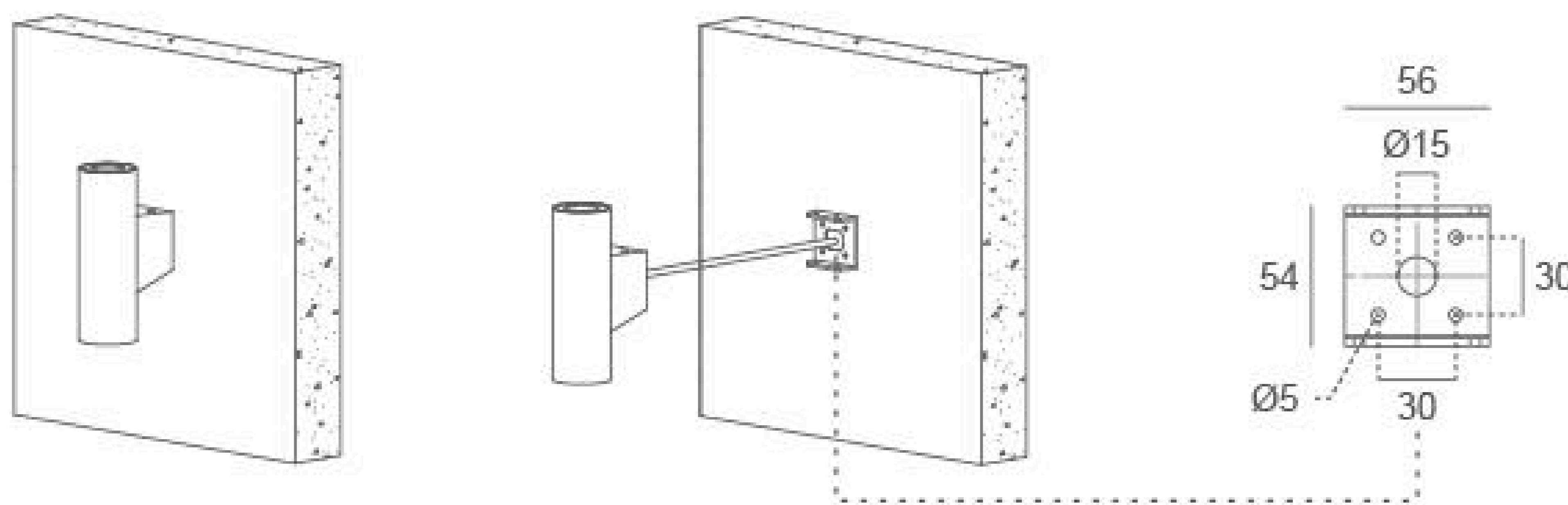
Sanded Dark Grey  
RAL 7037



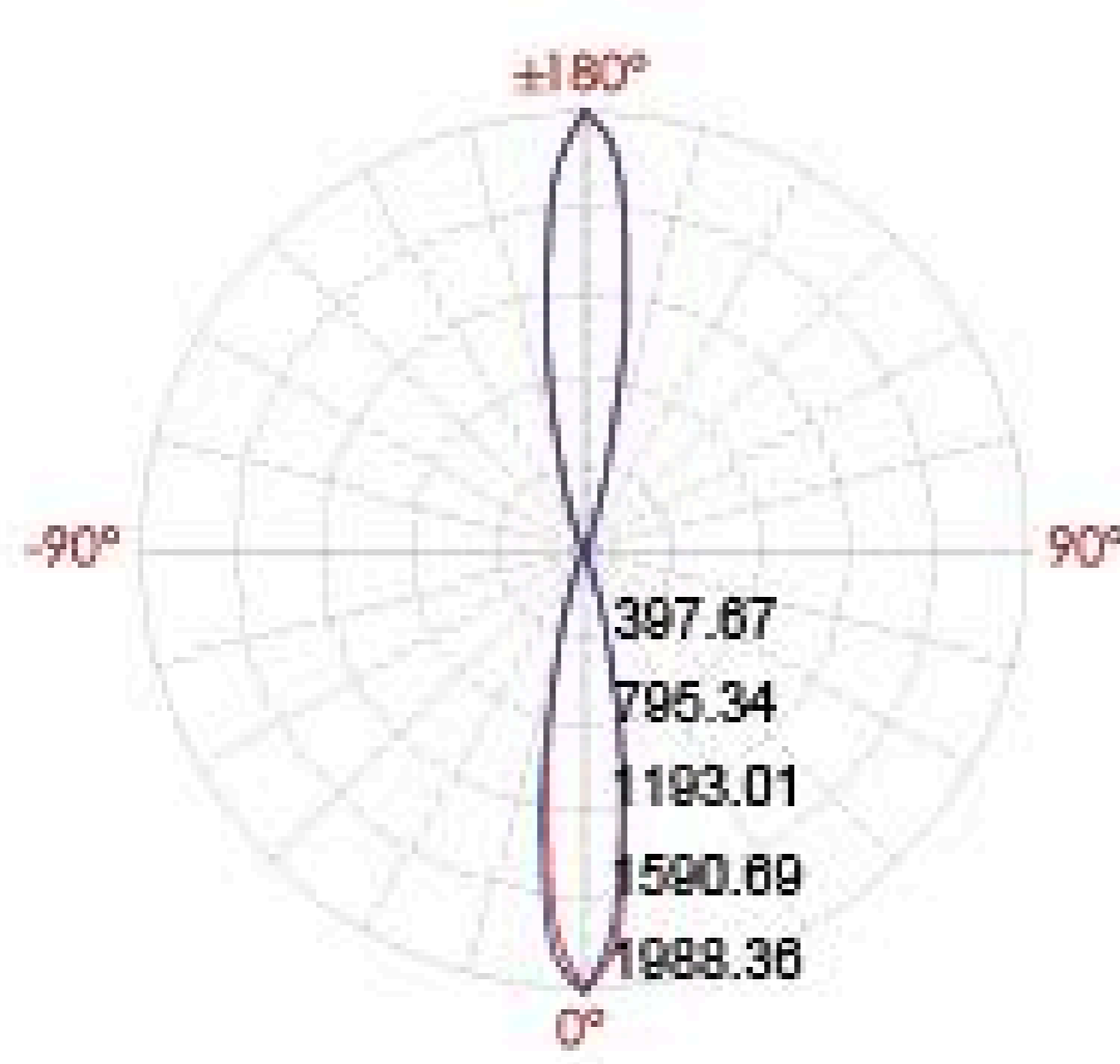
Sanded Bronze  
KAP 7008



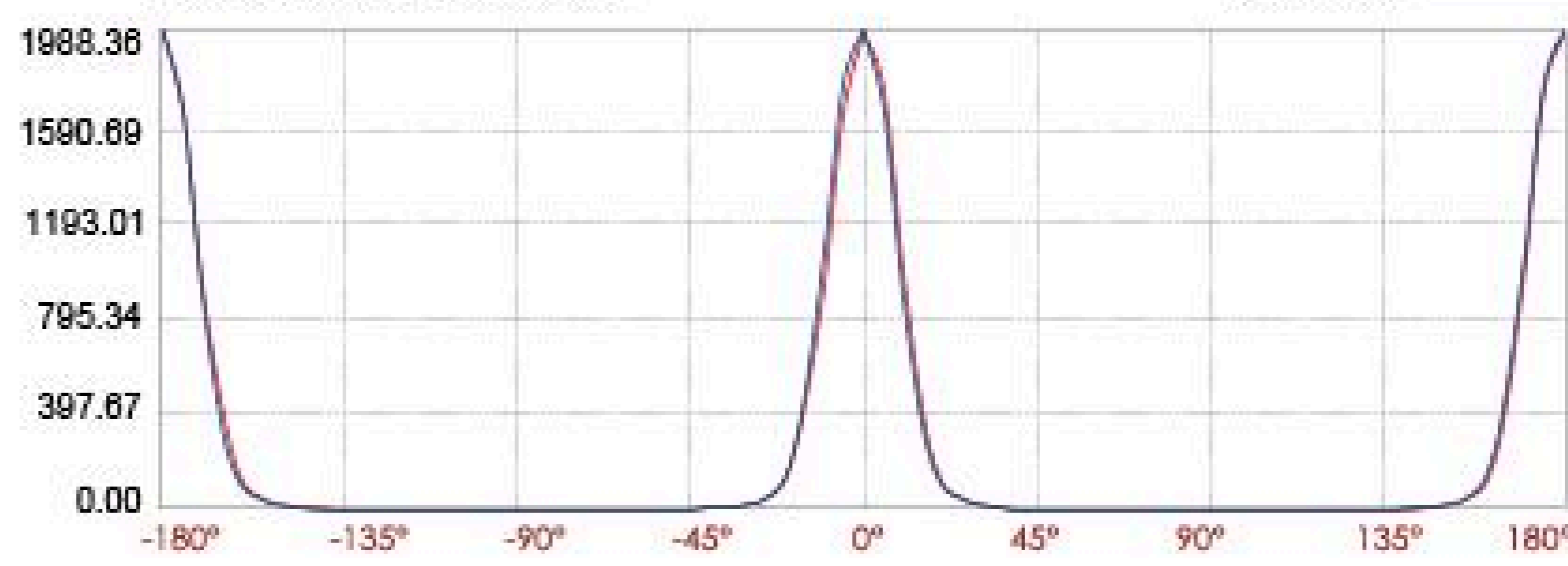
## Diagram of Instruction



## Photometric



Light distribution curve[Unit:cd]



C80(MAX):  
C0/C180:  
C80/C270:

Lux distance curve

