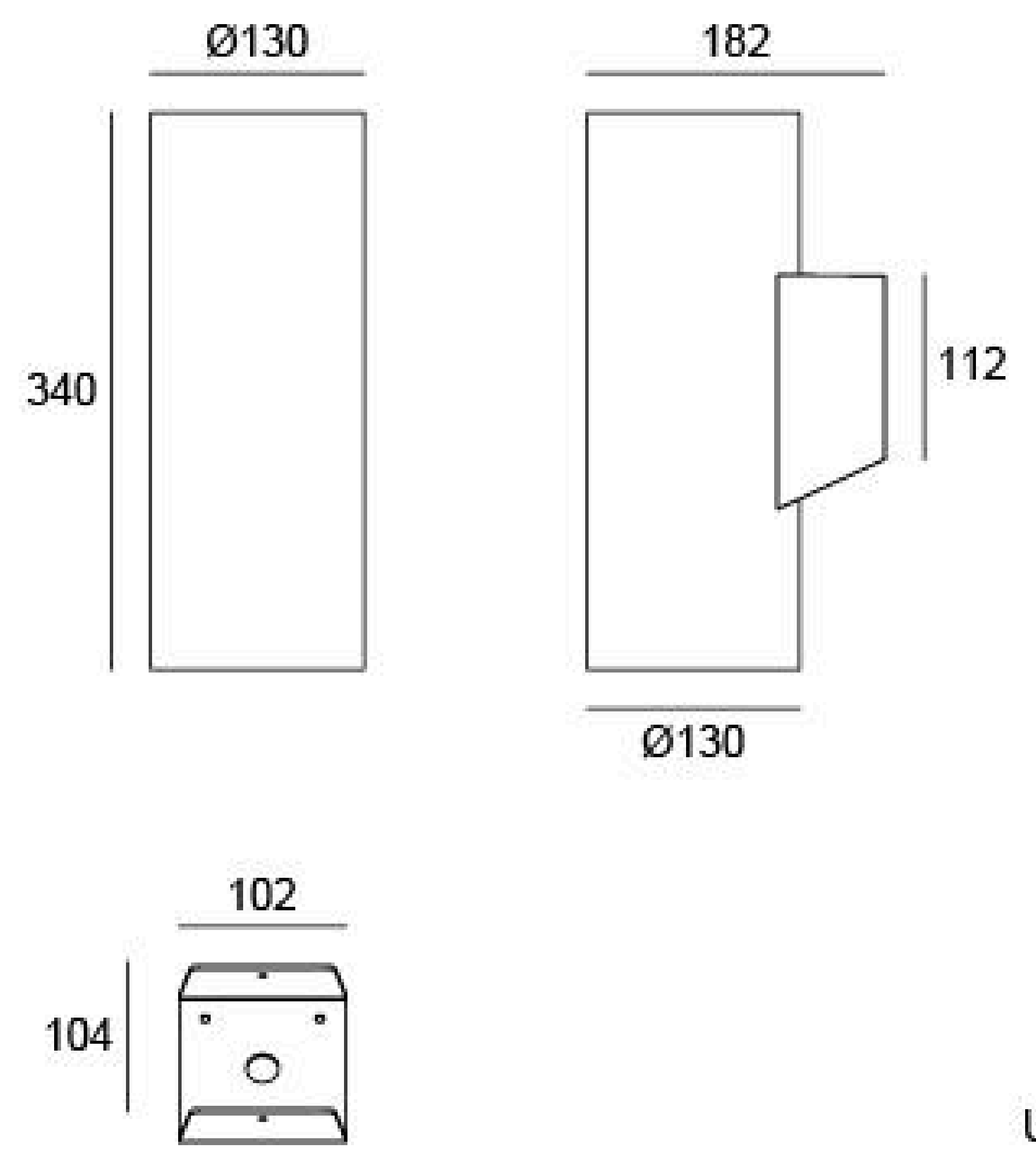


## 07CHR0270K (TWO SIDE)

Light Source	2x18W
Reflector	R19
Selected Degree (°)θ1/2	22°
Input Voltage (V)	DC 24 AC 240
Operating Current (MA)	24V=1660 240V=182
Consumption (W)	24V=40 240V=42
Luminance (LM)	CW=2224x2 WW=2036x2
IK	10

## Linear Drawing



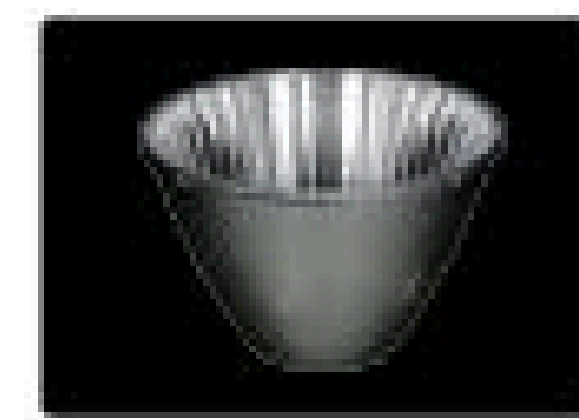
Unit: mm

## Specification

Housing	Extruded aluminum alloy #6063 powder coated T=60-80µm. Adhesion of ISO class 1/ASTM class 4B
Light Window	PC
Gasket	Waterproof silicone gasket
LED Type	COB
Driver	Built in on/off driver
Operating Temperature	-20°C~40°C
Power Cable	Outside of luminaire (Without waterstopper) 24V: H05RN-F 2×1.0mm <sup>2</sup> , L=0.3m 240V: H05RN-F 3×1.0mm <sup>2</sup> , L=0.3m

## LENS (Item Code)

Referenced Degree(°)θ1/2

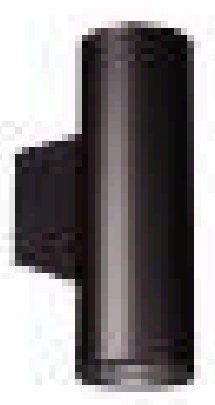


R19

10° 22° 38°

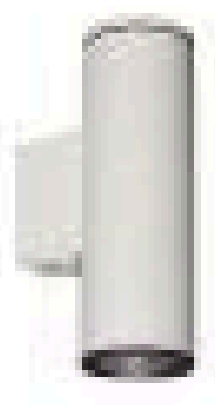
## Painting Color

### Primary

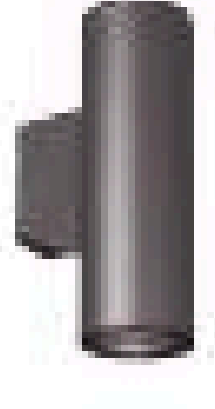


Sanded Black  
RAL 9005

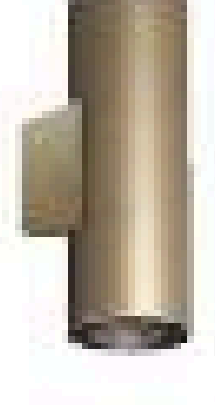
### Secondary



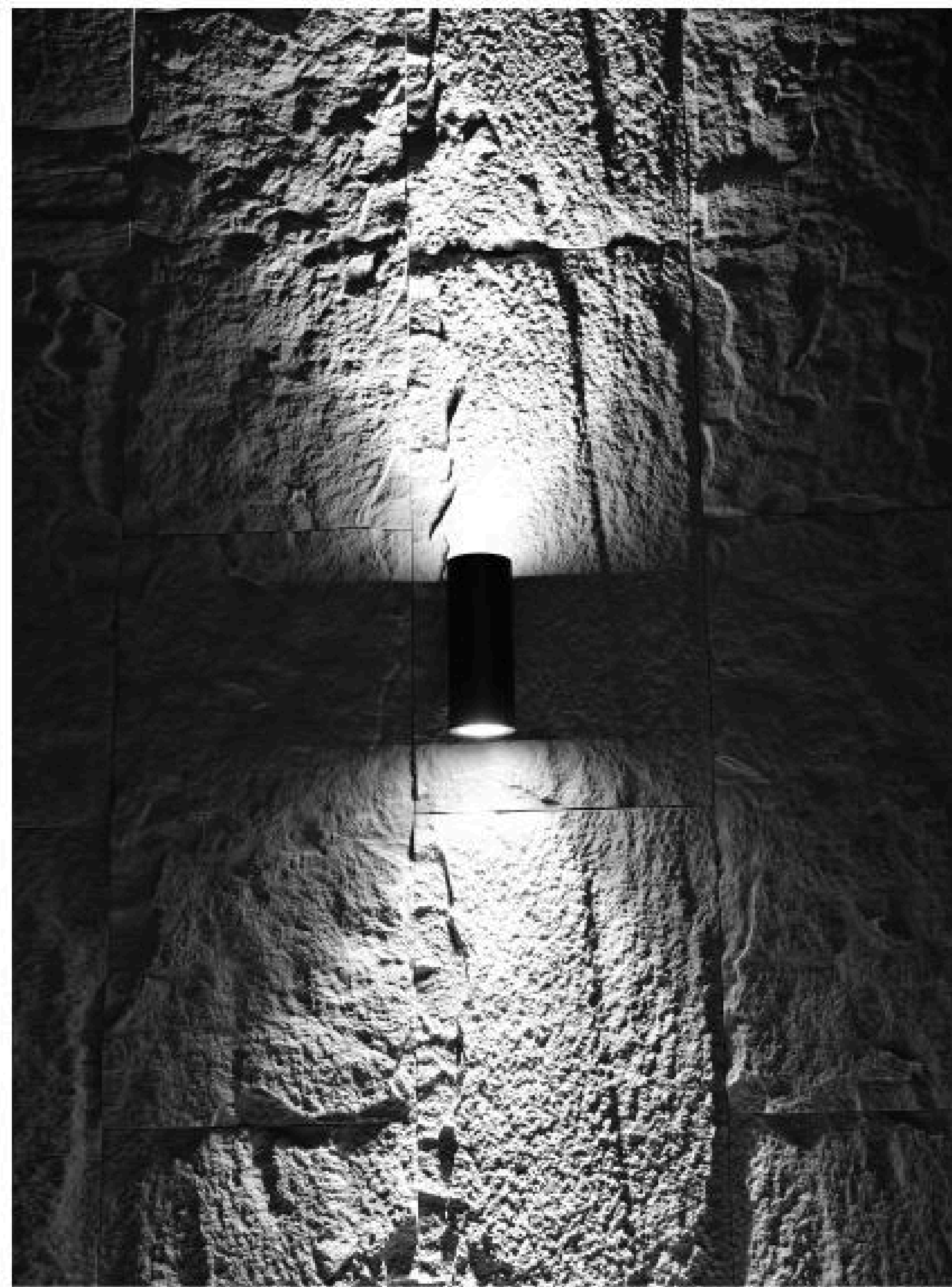
Sanded White  
RAL 9003



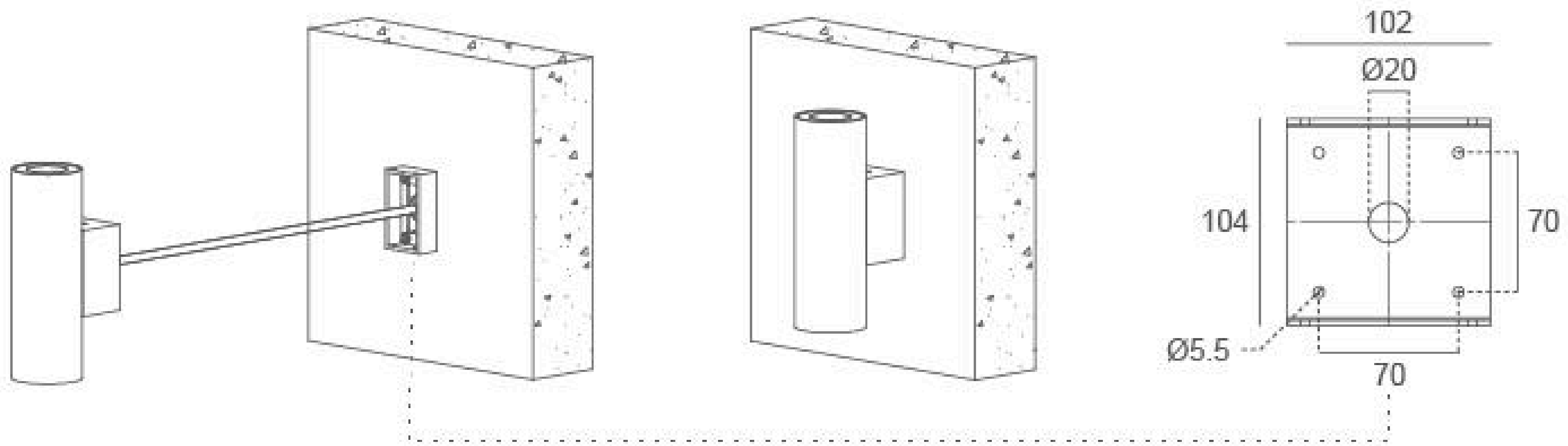
Sanded Dark Grey  
RAL 7037



Sanded Bronze  
KAP 7008

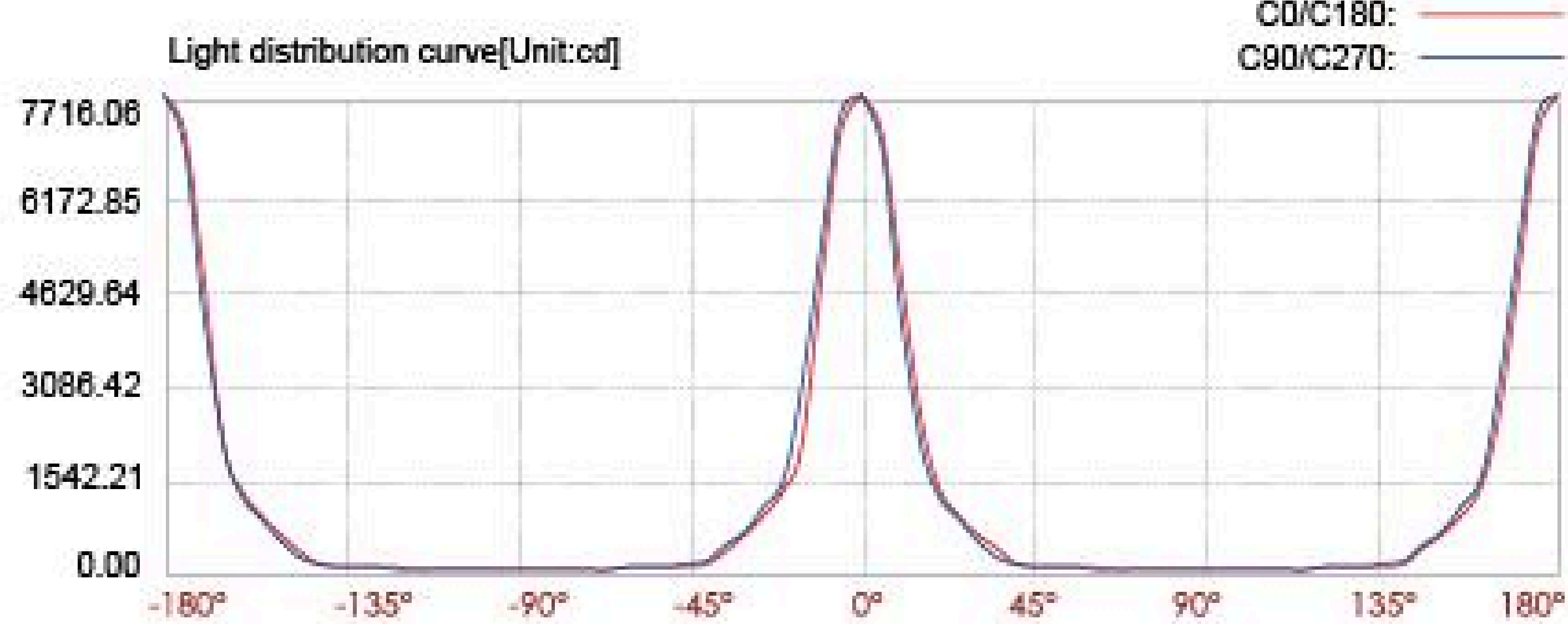
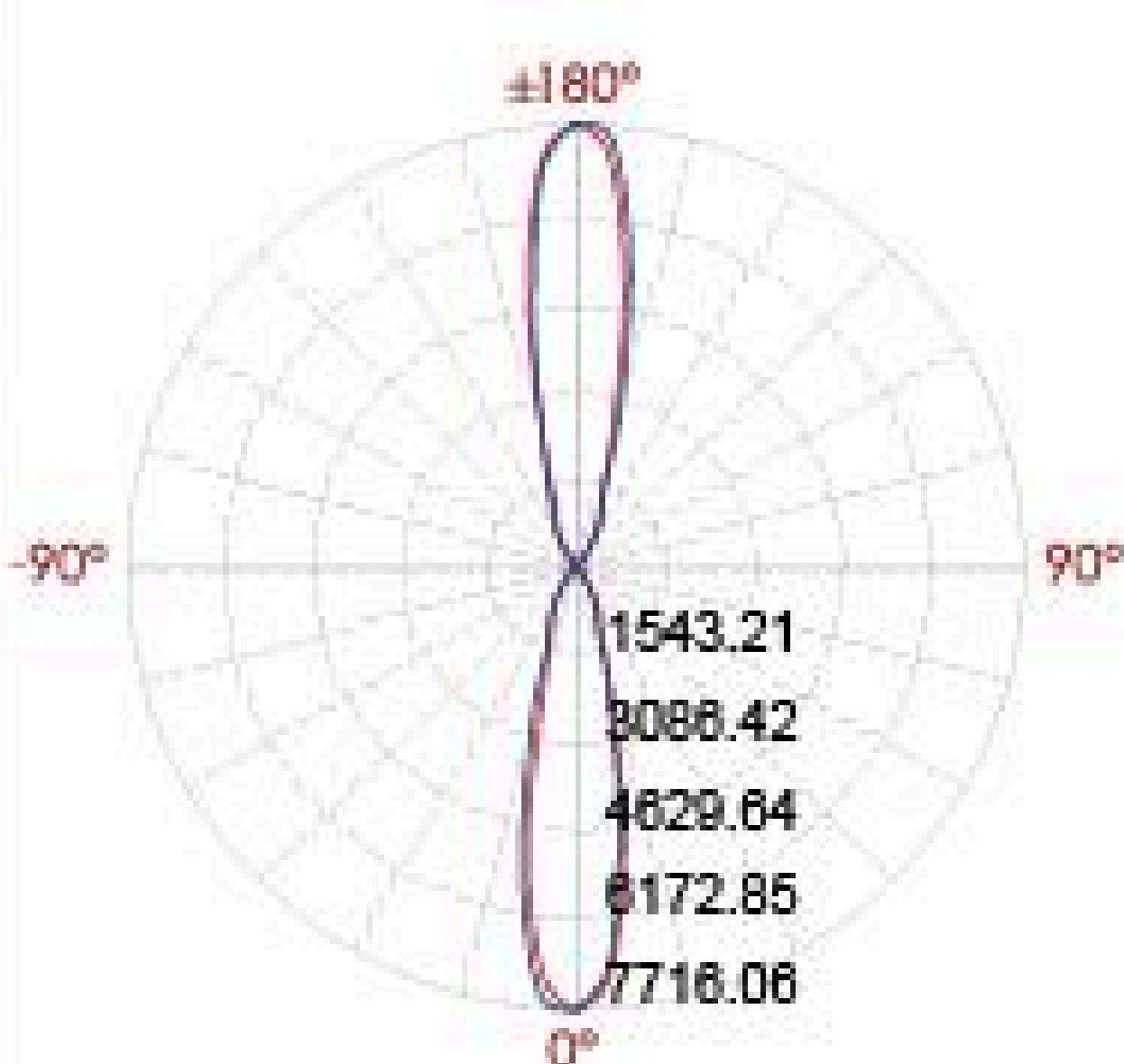


## Diagram of Instruction



## Photometric

12m	53.21 LUX
11m	
10m	76.62 LUX
9m	
8m	119.72 LUX
7m	
6m	212.84 LUX
5m	
4m	478.88 LUX
3m	
2m	195.52 LUX
1m	



Illuminance at a distance		
Center beam LUX	Beam width	
	V	H
2m	0.9m	0.9m
4m	1.7m	1.7m
6m	2.6m	2.6m
8m	3.4m	3.4m
10m	4.3m	4.3m
12m	5.1m	5.1m

Ver. Spread: 24.0 Horiz. Spread: 24.2