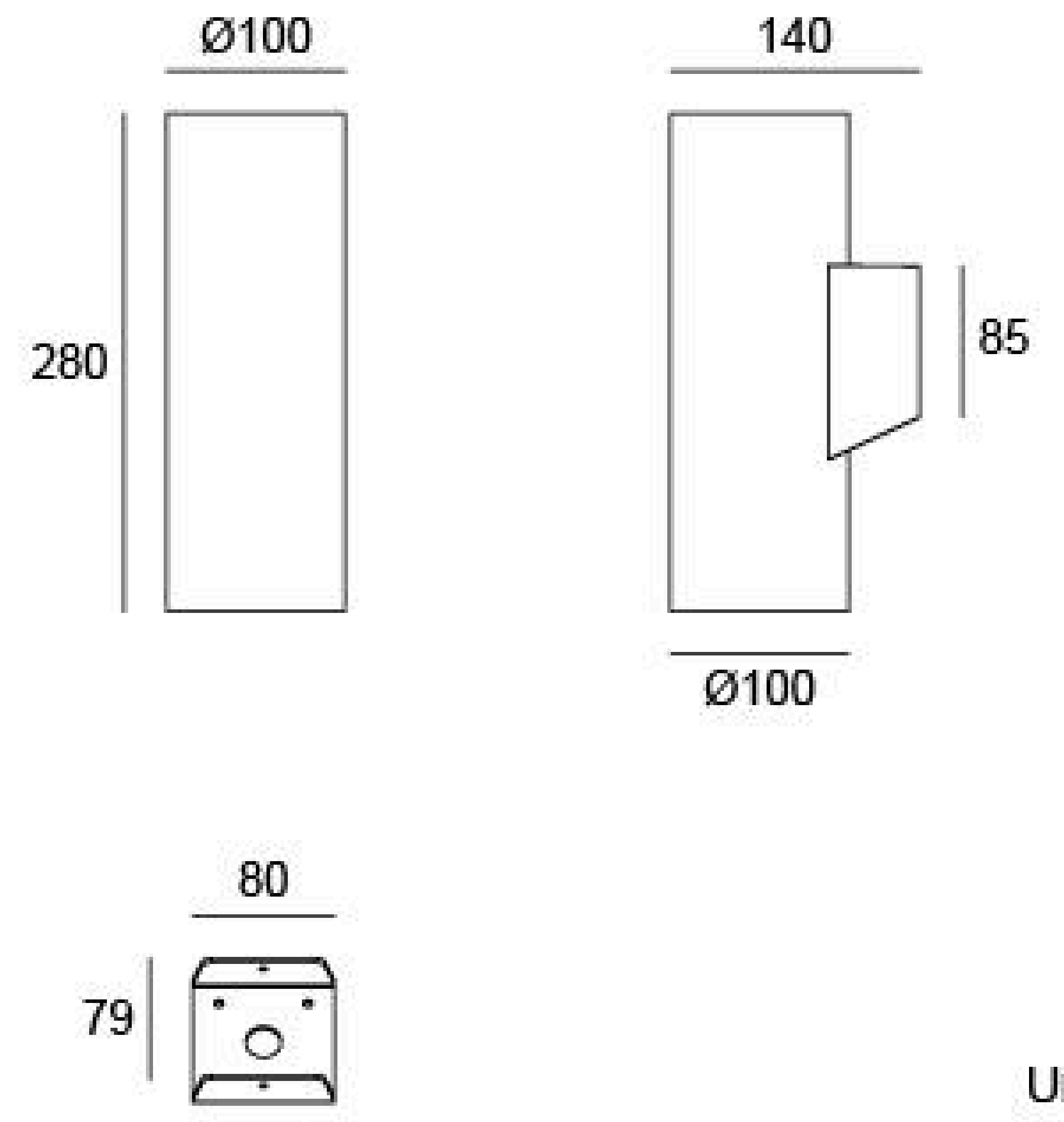


## 07BHR0229K (TWO SIDE)

Light Source	2x12W
Reflector	R17
Selected Degree (°)θ1/2	18°
Input Voltage (V)	DC 24 AC 120 240
Operating Current (MA)	24V=1080 120V=210 240V=116
Consumption (W)	24V=26 120=25.5 240V=25
Luminance (LM)	CW=1289x2 WW=1079x2
IK	10

## Linear Drawing



Unit: mm

## Specification

Housing	12# Die-Casting aluminum T=60-80µm. Adhesion of ISO class 1/ASTM class 4B
Light Window	PC
Gasket	Waterproof silicone gasket
LED Type	COB
Driver	Built in on/off driver
Operating Temperature	-20°C~40°C
Power Cable	Outside of luminaire (Without waterstopper) 24V: H05RN-F 2x1.0mm², L=0.3m 120V/240V: H05RN-F 3x1.0mm², L=0.3m

## Lens (Item Code)

Referenced Degree(°)θ1/2

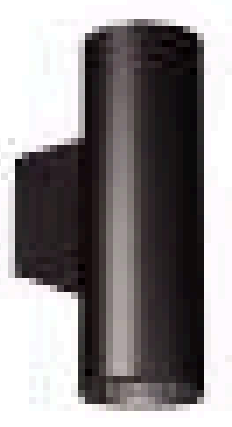


12° 18° 32°

R17

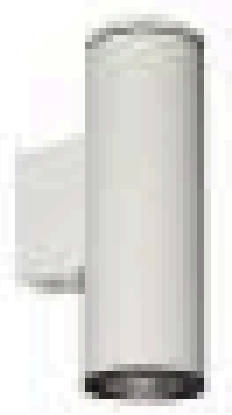
## Painting Color

### Primary

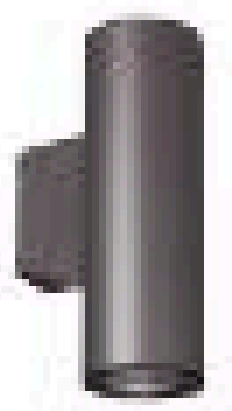


Sanded Black  
RAL 9005

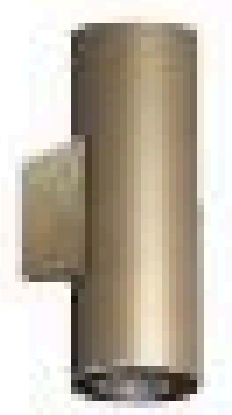
### Secondary



Sanded White  
RAL 9003



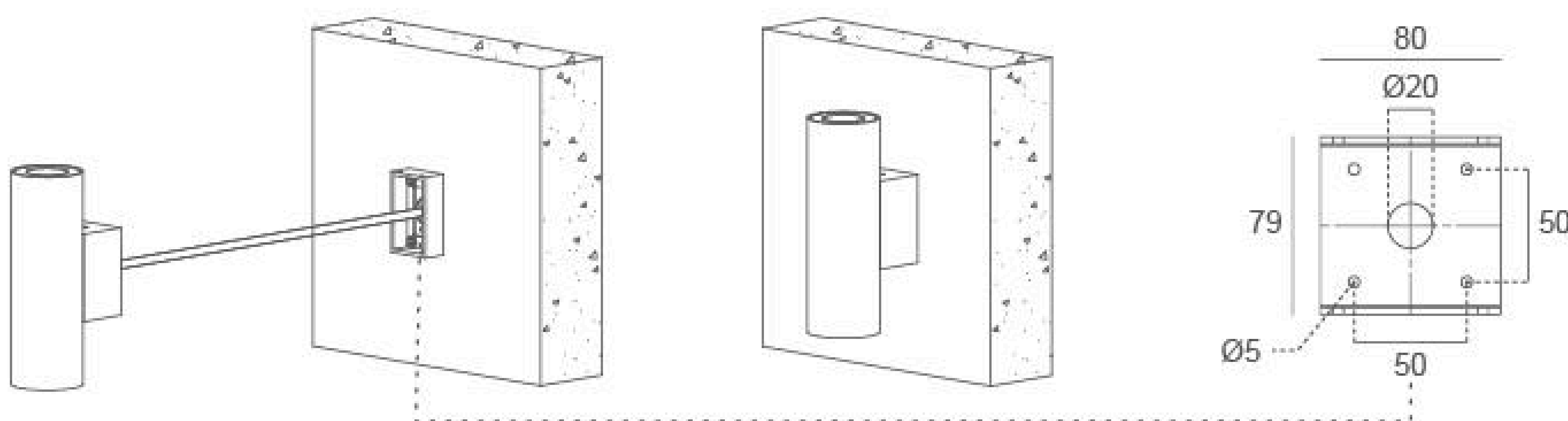
Sanded Dark Grey  
RAL 7037



Sanded Bronze  
KAP 7008

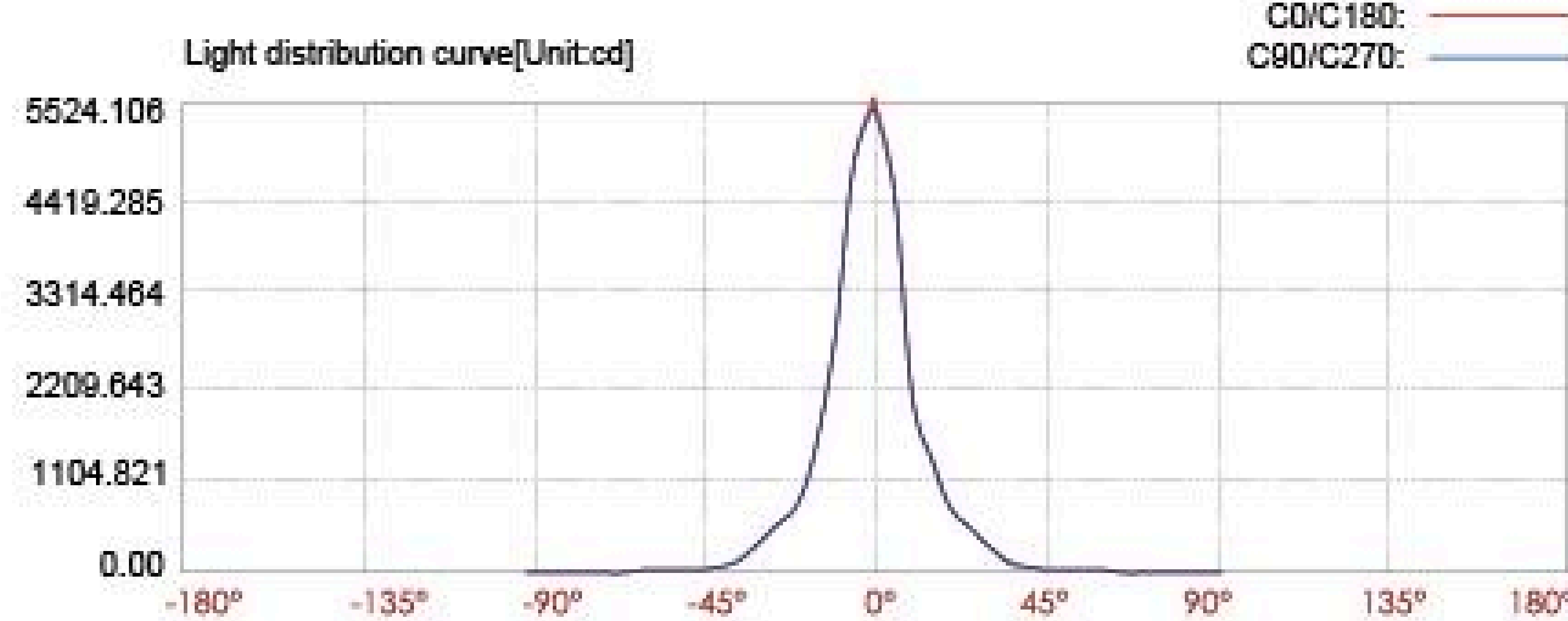
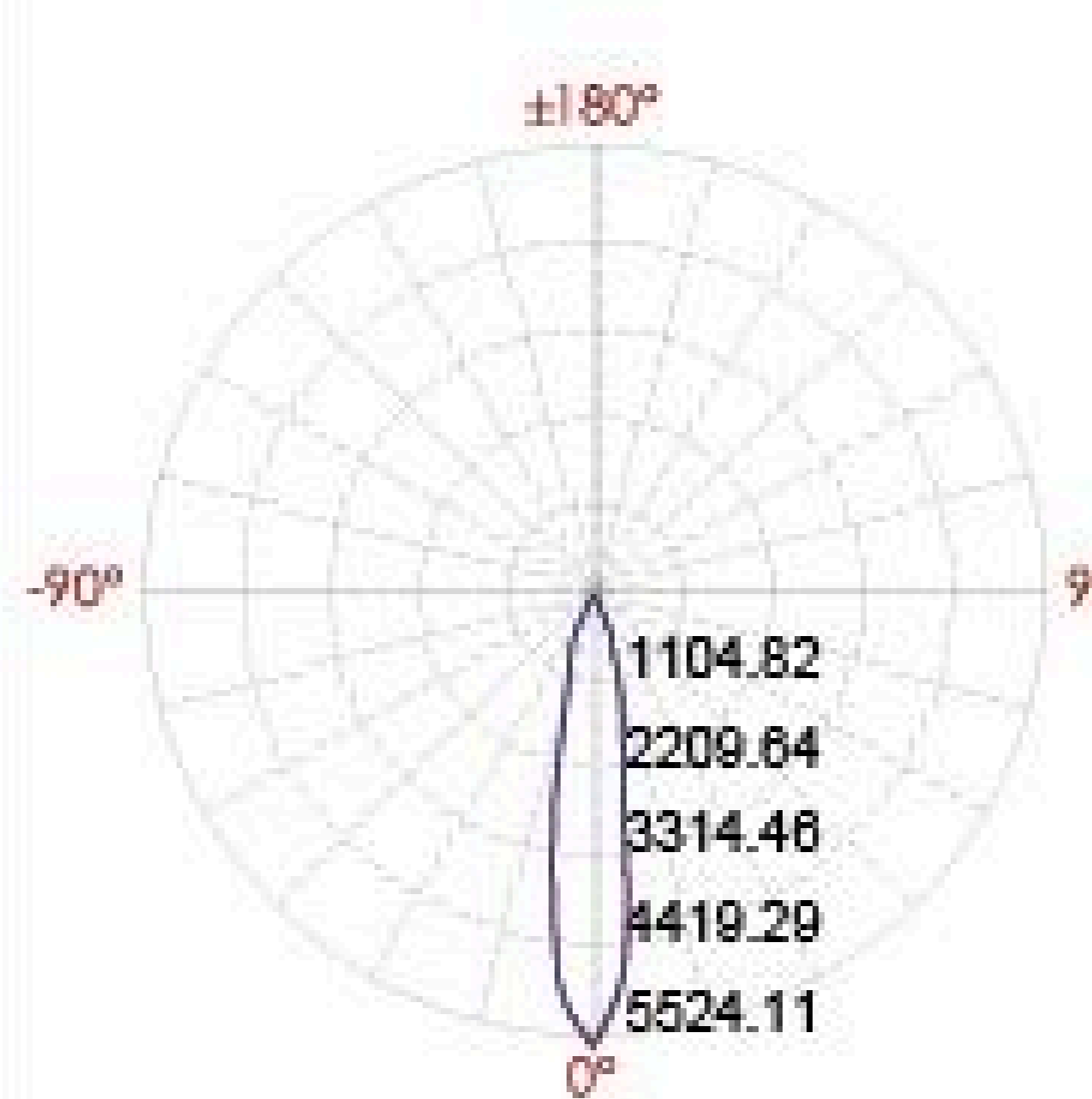


## Diagram of Instruction



## Photometric

12m	38.36 LUX
11m	
10m	55.24 LUX
9m	
8m	86.31 LUX
7m	
6m	153.45 LUX
5m	
4m	345.26 LUX
3m	
2m	1381.03 LUX
1m	



C90(MAX):  
C0/C180:  
C90/C270:

Illuminance at a distance		
Center beam LUX	Beam width H	
2m	1381.03 LUX	0.7m 0.7m
4m	345.26 LUX	1.3m 1.3m
6m	153.45 LUX	2.0m 2.0m
8m	86.31 LUX	2.7m 2.6m
10m	55.24 LUX	3.3m 3.3m
12m	38.36 LUX	4.0m 4.0m
Ver.Spread:18.8		Horiz.Spread:18.8