

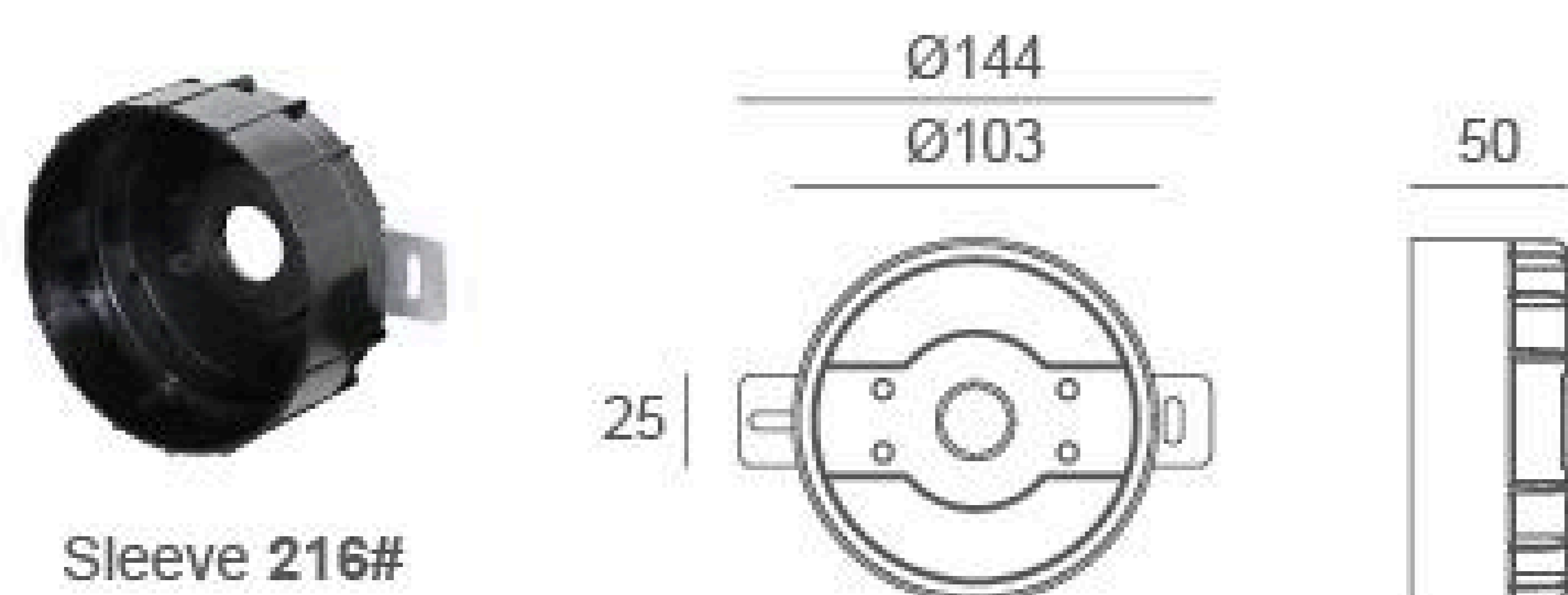
01AMD2832

Light Source	28x0.1W
Lens	N/A
Selected Degree (°)θ1/2	N/A
Input Voltage (V)	DC 24 AC 240
Operating Current (MA)	24V=125 240V=15
Consumption (W)	24V=3 240V=3.5
Luminance (LM)	WW=190
IK	08

Specification

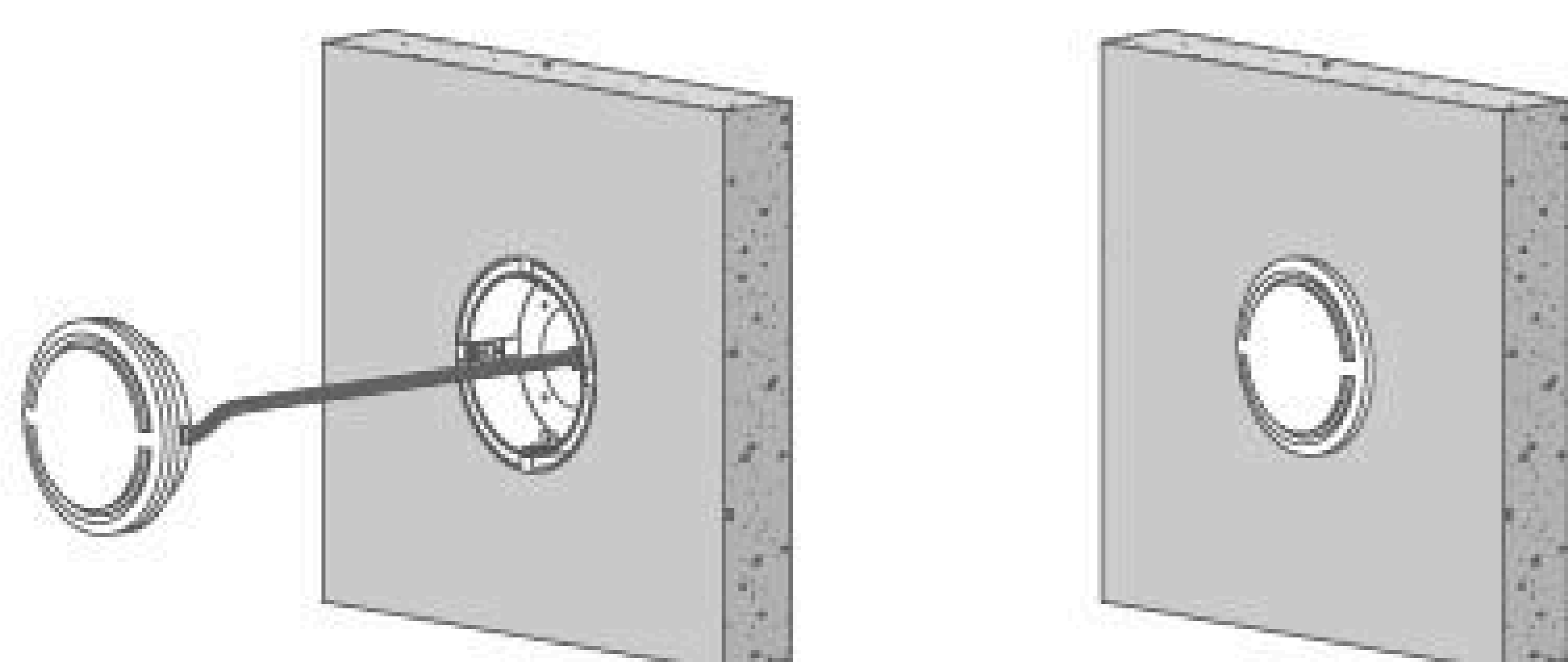
Front Cover & Housing	12# Die-casting RAL9005 powder coated aluminum T=60-80um.Adhesion of ISO class 1/ASTM class 4B
Light Window	UV stop & flame resistant PC
Gasket	Waterproof silicone gasket
Cable Gland	IP67
LED Type	SMD
Driver	Built in on/off driver
Recessed Sleeve	PC/ABS ALLOYS 216#
Operating Temperature	-20°C~40°C
Power Cable	Outside of luminaire (Without waterstopper) DC power: H05RN-F 2×1.0mm ² , L=0.3m(24V) AC power: H05RN-F 3×1.0mm ² , L=0.3m(240V)
Dimming Support	External DALI supported TRIAC,0-10V, PWM via external driver on request

Sleeve

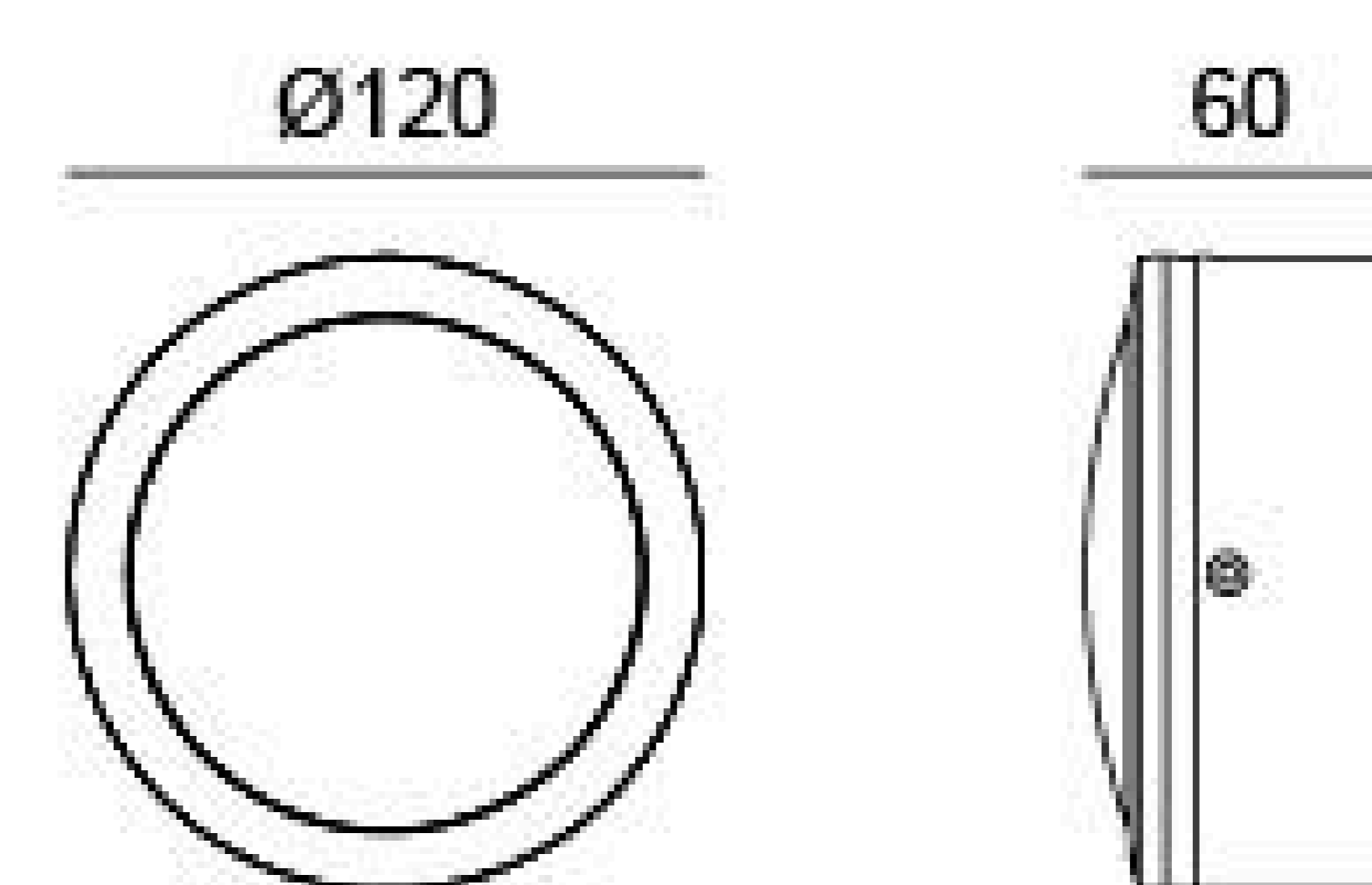


Sleeve 216#

Diagram Of Instruction



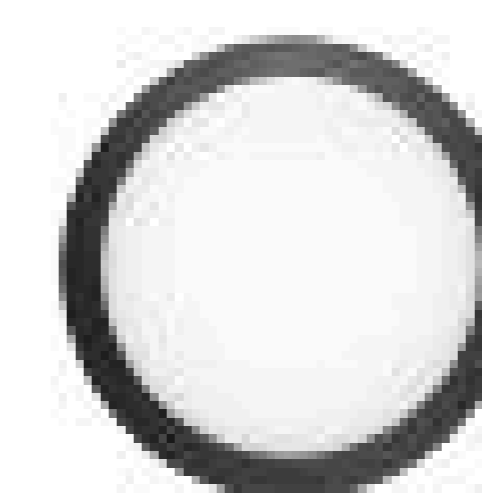
Linear Drawing



Unit: mm

Painting Color

Primary

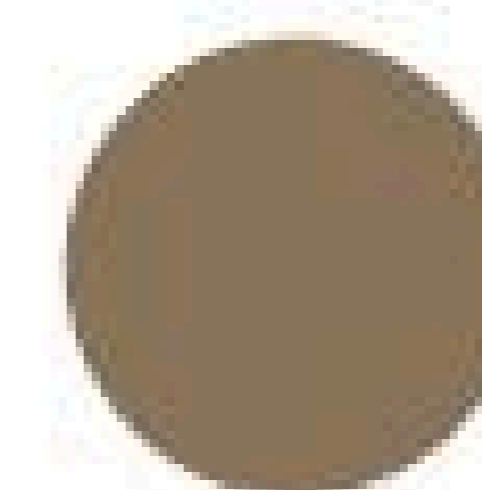


Sanded Black
RAL 9005

Secondary



Sanded Dark Grey
KAP 7037



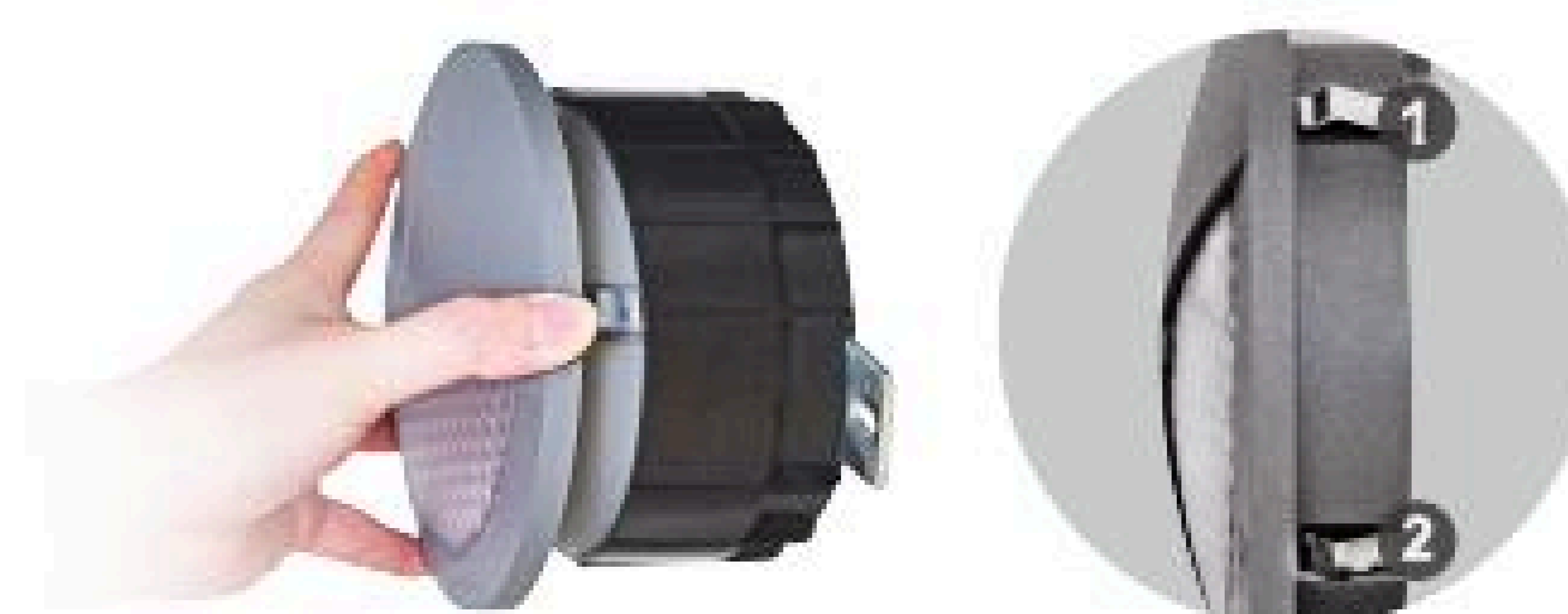
Sanded Bronze
KAP 7008



Sanded White
RAL 9003

Features

Screwless front cover



Use the high-strength clips for installation and extension.
(please refer remark ① & ②)